



RJ45 10/100/1000 BASE-TX 2x1 JACK WITH MAGNETICS MODULE

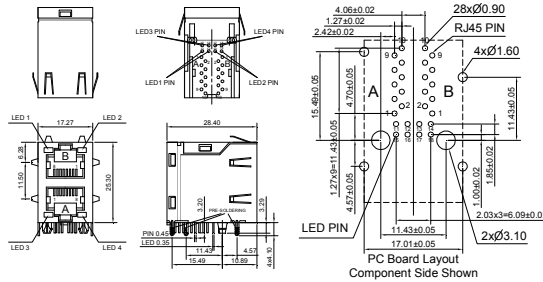
FEATURES

- 2X1 RJ45 with internal magnetics
- Suitable for CAT 5 & 6 Fast Ethernet Cable or better UTP
- Internal magnetics are 100% electrically tested for HI-POT and functionality
- 350 μH minimum OCL with 8 mA bias current
- Recognized by UL 60950-1



| ELECTRICAL SPECIFICATIONS @25°C-Operating temperature 0°C TO 70°C | | | | | | | | | |
|---|-------------|---------|-------------------------|---------|-------------------------------|------------|--------------------|--------------------------------|--------------|
| Part Number | Turns Ratio | | Insertion Loss (dB MAX) | | Return Loss (dB MIN) 100Ω±15Ω | | Crosstalk (dB TYP) | Common Mode Rejection (dB TYP) | Hipot (Vrms) |
| | TX | RX | 1-80 MHz | 100 MHz | 1-60 MHz | 60-100 MHz | 1-100 MHz | 1-100 MHz | @60Hz |
| 71F-1204GYDNW2 | 1CT:1CT | 1CT:1CT | -1.0 | -1.2 | -14 | -10 | -35 | -30 | 1500 |

Mechanicals:



Schematics

