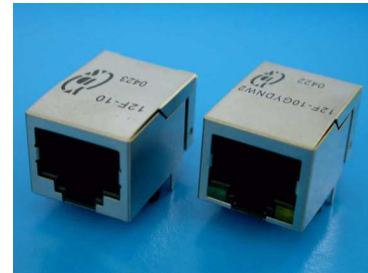




### RJ45 10BASE-T JACK WITH MAGNETIC MODULES

#### FEATURES

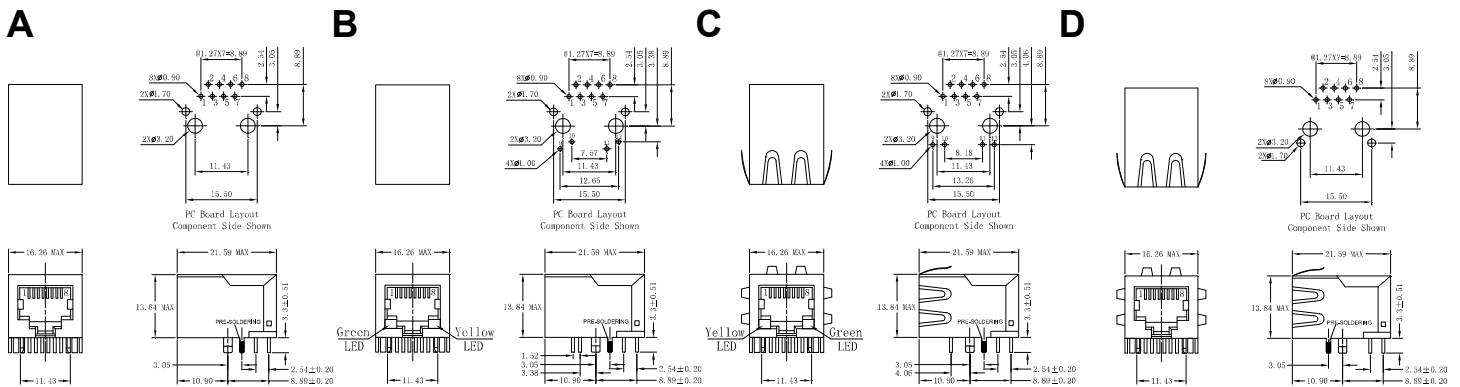
- RJ-45 connector integrated with Filter
- Size same as RJ-45 connector to save PCB board space
- Reduce EMI radiation, Improve EMI performance
- Operating temperature range: 0°C to +70°C
- Storage temperature range: -40°C to +125°C



#### ELECTRICAL SPECIFICATIONS @25°C-Operating temperature 0°C TO 70°C

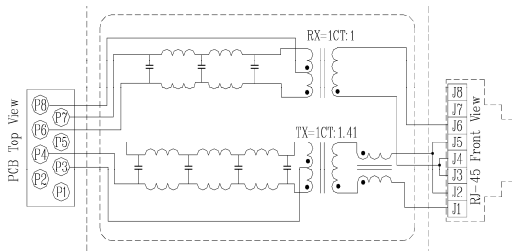
Part Number	Insertion Loss (dB MAX.)	Attenuation TX/RX(dB MIN)				Return Loss TX & RX @100Ω±15Ω (dB MIN)		Cross talk (dB MIN)	CMR (dB MIN)	Mechanical	Turns Ratio TX/RX (±5%)
		1-10MHz	20 MHz	25 MHz	30 MHz	40 MHz	1-10 MHz				
14F-10NW2	-1.0	-7/-5	-18/-11	-28/-16	-33/-26	—	-13.5	-30	-30	A	1CT:1.41/1CT:1
12F-10EGYDNW2	-1.0	-5/-4.2	-18/-11	-28/-16	-33/-26	—	-14	-30	-30	B	1CT:1CT/1CT:1CT
12F-11YGD2	-1.0	—	—	-30/-18	—	-15	—	-30	—	C	1CT:1.41CT/1CT:1CT
12F-15BPND2	-1.0	-7/-6	-19/-14	-30/-20	-32/-31	—	-17	-30	—	D	1CT:1CT/1CT:1CT

#### Mechanical and Dimension

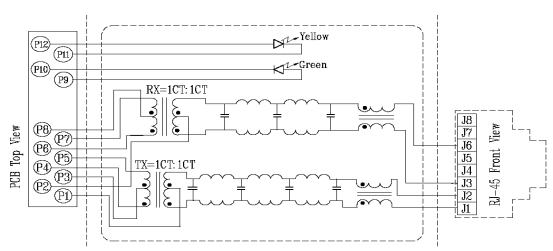


#### SCHEMATICS

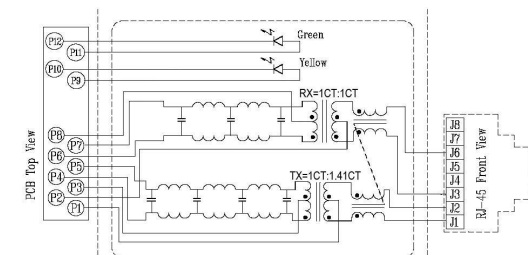
##### 14F-10



##### 12F-10E



##### 12F-11YGD



##### 12F-15

