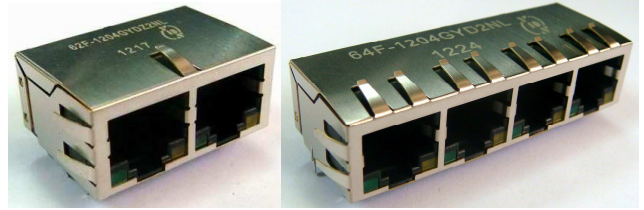




### FEATURES

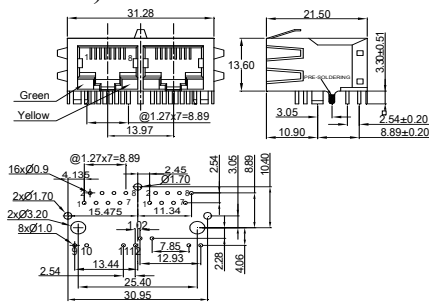
- RJ45 1xN, Tab-DOWN 8-pin&10-pin with internal magnetics
- Options: 1x2, 1x4 for 10/100/1000 Base-TX
- Available with and without LEDs
- Suitable for CAT 5 and 6 Fast Ethernet cable or better UTP
- Internal magnetics are 100% electrically tested for HI-POT and functionality
- 350uH minimum OCL with 8mA bias current
- Minimum 1500Vrms isolation per IEEE 802.3 requirement
- Recognized by UL 60950-1



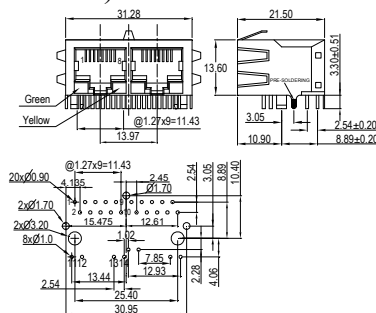
ELECTRICAL SPECIFICATIONS @25°C-Operating temperature 0°C TO 70°C														
Part Number	Turns Ratio ±5%		TAB Option	LEDs	Insertion Loss (dB TYP)	Return Loss (dB TYP@100Ω±15Ω)			Crosstalk (dB TYP)			Common Mode Rejection (dB TYP)		Hipot (V <sub>rms</sub> )
	TX	RX				L/R	0.3-100 MHz	1- 10 MHz	30 MHz	60-80 MHz	1-10 MHz	30-60 MHz	60-100 MHz	
62F-1204GYD2	1CT:1CT	1CT:1CT	DOWN	G/Y	-1.2	-18	-16	-12	-40	-35	-30	-30	-20	1500
64F-1204GYD2	1CT:1CT	1CT:1CT	DOWN	G/Y	-1.2	-18	-16	-12	-40	-35	-30	-30	-20	1500

### Mechanicals and Dimensions

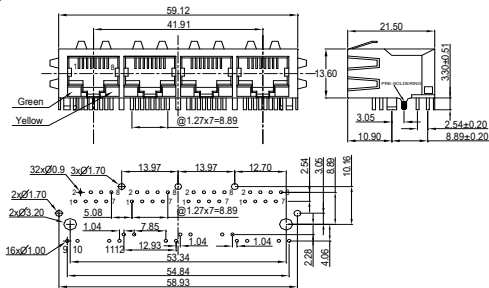
62F(10/100 Base-T):



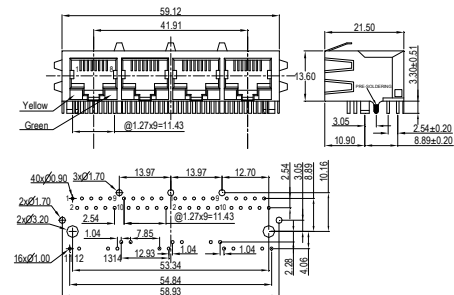
62F(1000 Base-T):



64F(8W):



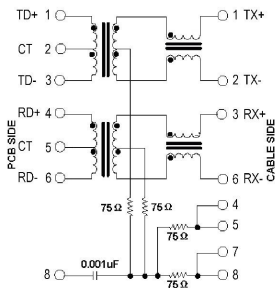
64F:



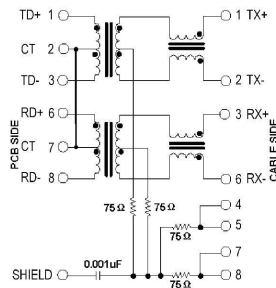


### SCHEMATICS:

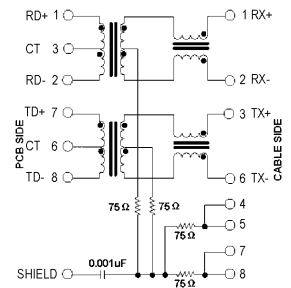
#### 1201



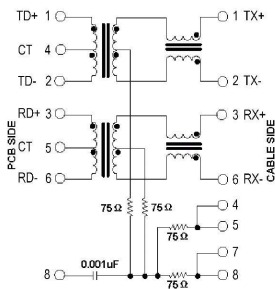
#### 1202



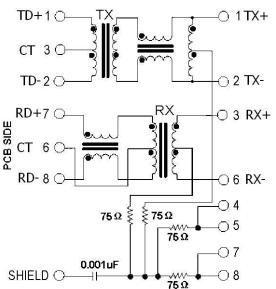
#### 1203



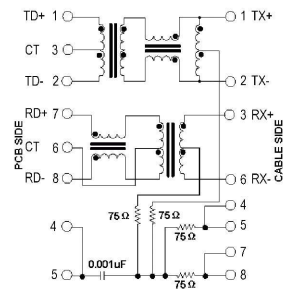
#### 1204



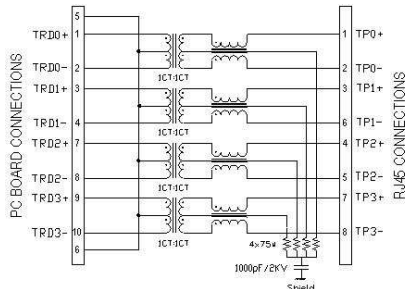
#### 1205



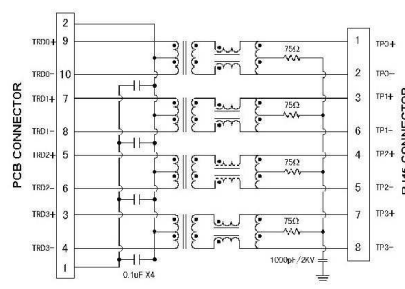
#### 1207



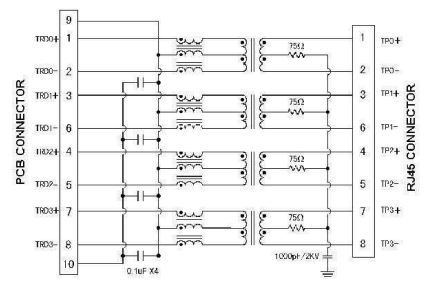
#### 1301



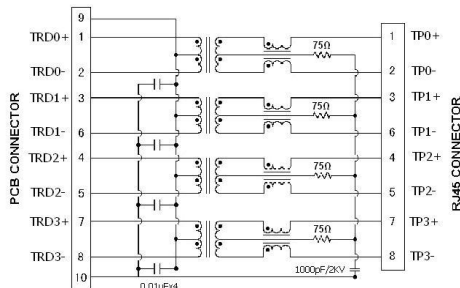
#### 1302



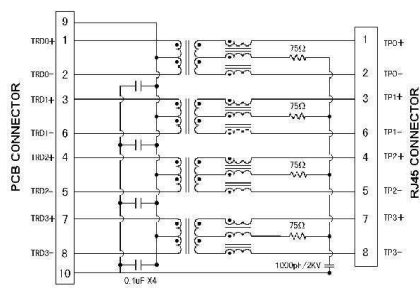
#### 1303



#### 1304



#### 1305



#### 1306

