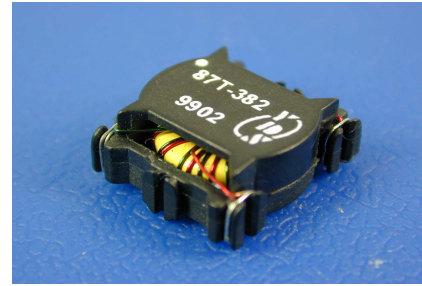




FEATURES

- SELF-LEADED, SURFACE MOUNT
- SUITED FOR IR AND VAPOR PHASE REFLOW SOLDERING.
- DESIGNED FOR SWITCHING POWER SUPPLY APPLICATIONS
- RECOGNIZED BY UL 1950



ELECTRICAL SPECIFICATIONS @25°C-Operating temperature -30°C TO +130°C

PART NUMBER	I (Amps)	RT (Ω)	DROOP (%)	Ls (mH MIN)	Rs (Ω MAX)	YURNS (Ns)	HIPOT (Vrms)
87T-382C3/T4	15.3	25	1.3	3.8	0.38	50	500
87T-142C3/T4	16.3	50	0.7	14.8	0.93	100	500
87T-592C3/T4	16.4	100	0.3	59.2*	3.9	200	500

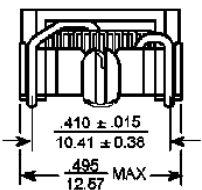
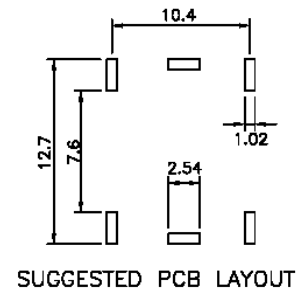
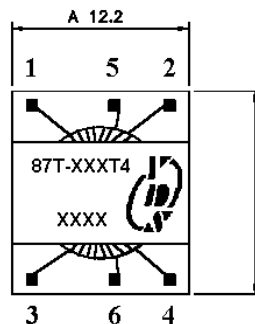
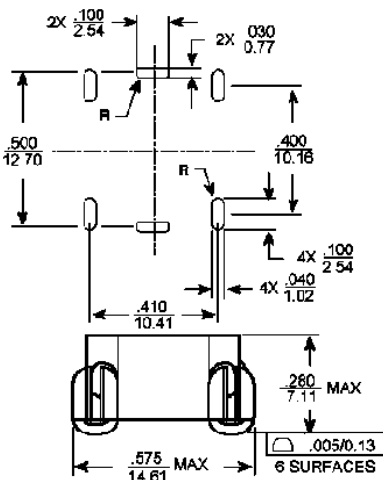
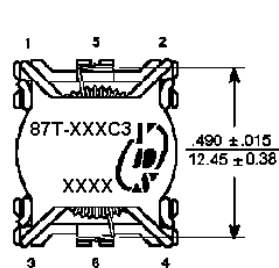
Note:

1. Inductance is measured at 100KHz, 20 mVrms.*10KHz,60 mVrms.
2. Hipot is 500 Vrms, measured at 60 Hz, 2 seconds.
3. I, R_T, and Droop are reference values only.
4. Reference values are for the one turn winding connected in parallel for unipolar operation at 200KHz.

MARKINGS AND DIMENSION

C3

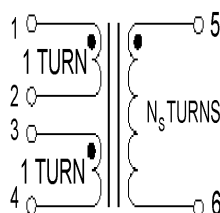
T4



Dimensions: inches/mm

Unless otherwise specified, all tolerances are ±.005/±0.13

SCHEMATIC



Part Number

87T - 382 C3 NL
A B C D

- A: Series
- B: Inductance
- C: Mechanicals
- D: RoHS Version