

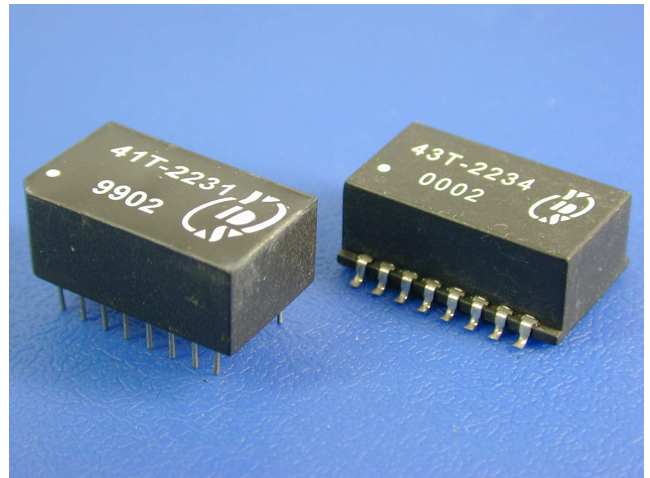


FEATURES

- MEETS PULSE WAVEFORM TEMPLATE OF CCITT I.430 WHEN RECOMMENDED TRANSFORMER AND CHIP PAIR IS USED
- EXCELLENT LONGITUDINAL BALANCE
- 2KVrms ISOLATION VOLTAGE
- RECOGNIZED BY UL 1950.

TEST CONDITIONS

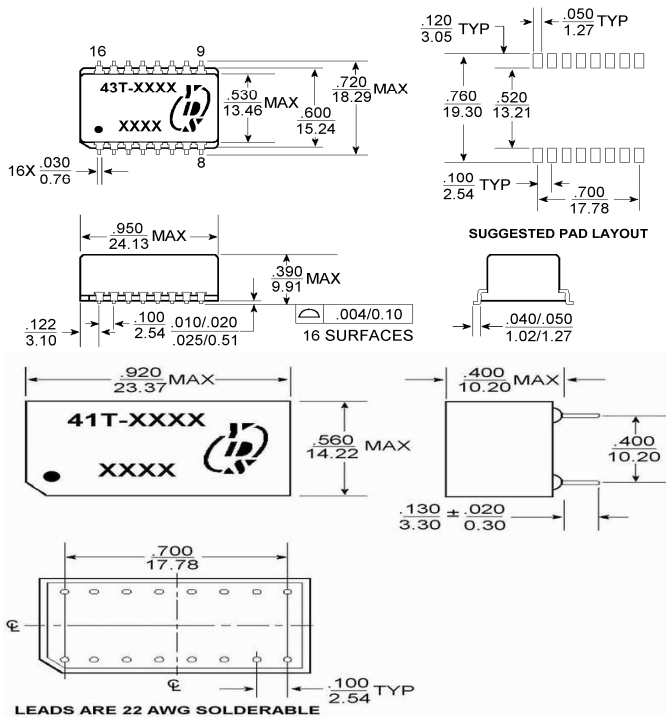
- Inductance ----- 10KHZ/200mV
- Leakage Inductance ----- 100KHZ/1V
- Interwinding Capacitance -- 100KHZ/1V



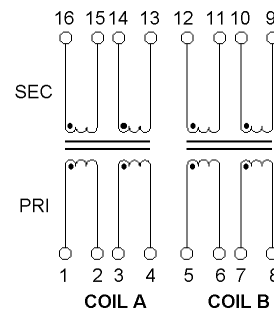
ELECTRICAL SPECIFICATIONS @25°C-Operating temperature 0°C TO 70°C

PART NUMBER	RATIO (±2%)		OCL Pri. (mH min.)	LL Sec. (uH max.)		CWW (pf max.)	CD Pri. (pf max.)		DCR Pri. (Ω±15%)		DCR Sec. (Ω±15%)		ΔIdc (mA max.)
	A	B	A&B	A	B	A&B	A	B	A	B	A	B	
41T/43T-2231	1:1	1:2	22	5	5	100	42	80	2.4	2.3	2.4	4.0	1
41T/43T-2232	1:1	1:1	22	5	5	100	42	42	2.4	2.4	2.4	2.4	1
41T/43T-2233	1:1.8	1:1.8	22	15	15	100	140	140	2.5	2.5	4.2	4.2	1
41T/43T-2234	1:2	1:2	22	15	15	100	80	80	2.5	2.5	4.3	4.3	1
41T/43T-2235	1:2.5	1:2.5	22	8-40	8-40	100	110	110	2.5	2.5	5.8	5.8	1
41T/43T-2236	1:2	1:2	22	11	11	100	180	180	2.4	2.4	4.4	4.4	1

MARKINGS AND DIMENSIONS



Schematics



Part Number: 41T/43T - 223 1 NL
 A B C D

A:Series
 B:Inductance
 C:Sequence id
 D:RoHS Version

Dimensions: inches/mm Unless otherwise specified, all tolerances are ±.010/±0.25